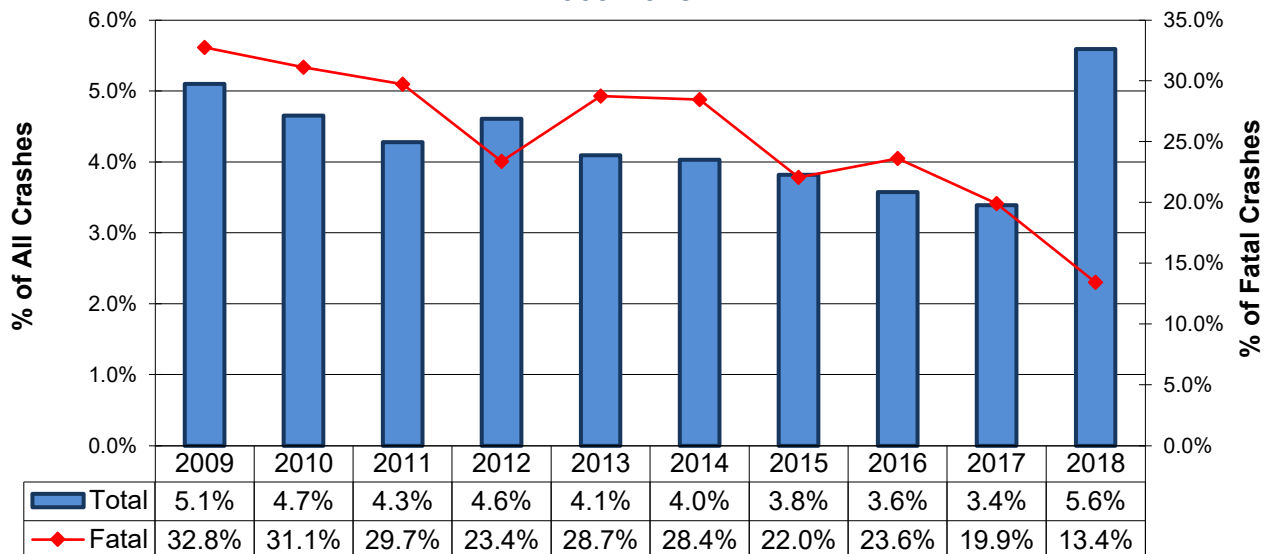


# Alcohol-Related Crashes

Type	Total	Alcohol-Related	% of All
<b>Crashes</b>			
All	64,935	2,125	3.3%
Fatal	365	49	13.4%
Injury	13,531	791	5.8%
PDO	51,036	1,285	2.5%
<b>People</b>			
All	142,580	3,631	2.5%
Deaths	403	56	13.9%
Injuries	18,602	1,068	5.7%
Unharmed	123,560	2,507	2.0%



**Alcohol-Related Crash History  
2009-2018**

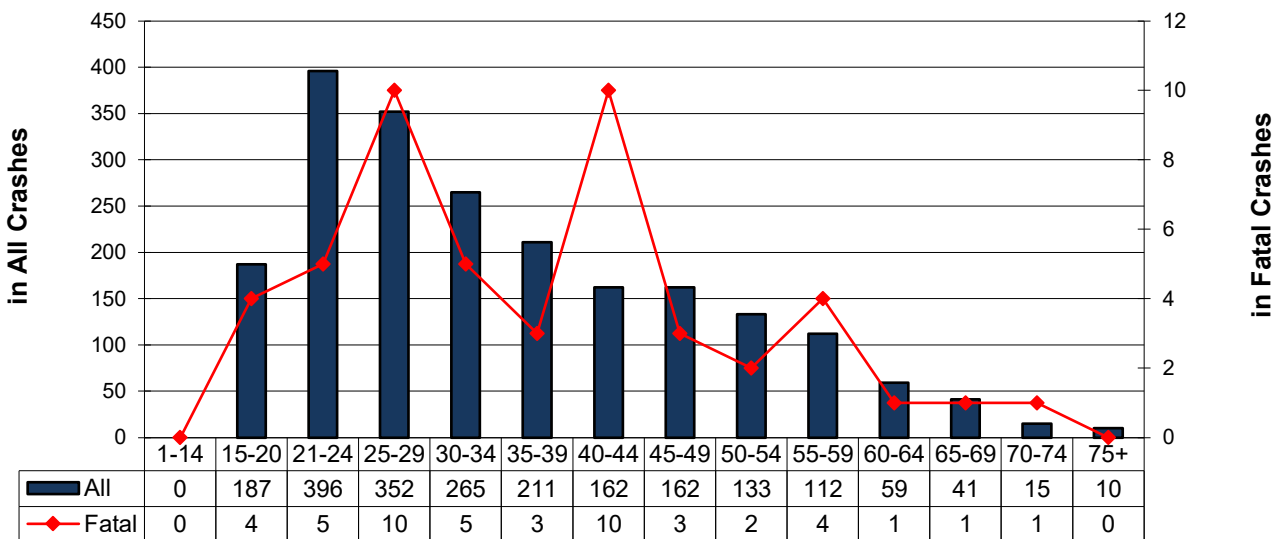


# Alcohol-Related Crashes By Driver Age



Alcohol-Impaired Driver Ages	Crashes				People	
	Total	Fatal	Injury	PDO	Deaths	Injured
Unknown	20	0	4	16	0	5
1-14	0	0	0	0	0	0
15-20	187	4	69	114	5	94
1-20	187	4	69	114	5	94
21-24	396	5	153	238	5	215
25-29	352	10	129	213	11	184
30-34	265	5	92	168	5	118
35-39	211	3	85	123	4	123
40-44	162	10	59	93	11	77
45-49	162	3	74	85	3	99
50-54	133	2	46	85	2	60
55-59	112	4	33	75	4	36
60-64	59	1	23	35	3	30
65-69	41	1	12	28	1	13
70-74	15	1	6	8	2	7
75+	10	0	4	6	0	4

Alcohol-Impaired Drivers by Age Group



Note: More than one driver per age group can be involved in the same crash.

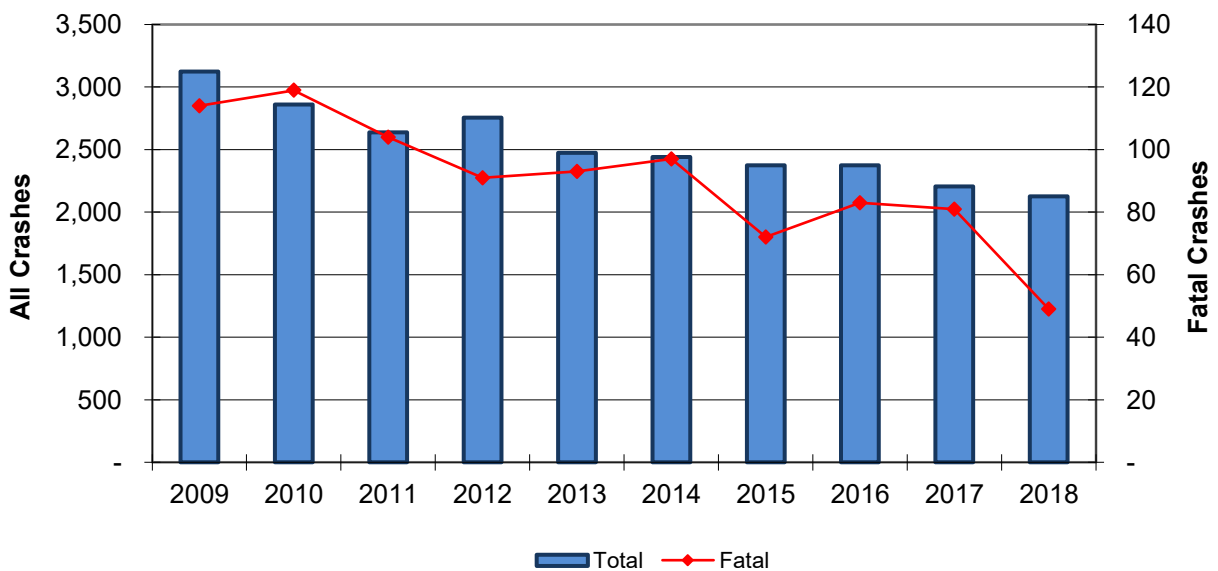
# Alcohol-Related Crashes

## 2009-2018 Summary

Year	Crashes				People	
	Total	Fatal	Injury	PDO	Deaths	Injuries
2009	3,125	114	1,341	1,670	125	1,922
2010	2,860	119	1,176	1,565	140	1,680
2011	2,638	104	1,117	1,417	114	1,583
2012	2,755	91	1,224	1,440	103	1,719
2013	2,475	93	1,019	1,363	95	1,370
2014	2,440	97	1,001	1,342	109	1,426
2015	2,374	72	950	1,352	77	1,337
2016	2,374	83	906	1,385	92	1,232
2017	2,206	81	819	1,306	90	1,141
2018	2,125	49	791	1,285	56	1,068
<b>Total</b>	<b>25,372</b>	<b>903</b>	<b>10,344</b>	<b>14,125</b>	<b>1,001</b>	<b>14,478</b>



2009-2018 Alcohol-Related Crash Summary



# Alcohol-Related Crashes

## Involving Alcohol-Impaired Male Drivers

Year	Crashes				People	
	Total	Fatal	Injury	PDO	Deaths	Injuries
2009	2,556	105	1,115	1,336	116	1,623
2010	2,258	104	939	1,215	125	1,393
2011	2,096	88	916	1,092	98	1,293
2012	2,200	85	995	1,120	97	1,434
2013	1,974	91	855	1,028	93	1,179
2014	1,928	91	808	1,029	103	1,188
2015	1,955	87	813	1,055	96	1,211
2016	1,864	80	732	1,052	91	1,028
2017	1,685	73	649	963	82	935
2018	1,599	35	615	949	41	850
<b>Total</b>	<b>20,115</b>	<b>839</b>	<b>8,437</b>	<b>10,839</b>	<b>942</b>	<b>12,134</b>

## Involving Alcohol-Impaired Female Drivers

Year	Crashes				People	
	Total	Fatal	Injury	PDO	Deaths	Injuries
2009	887	30	404	453	33	669
2010	893	33	373	487	41	602
2011	747	29	285	433	32	463
2012	806	21	359	426	27	586
2013	721	22	271	428	23	434
2014	779	22	331	426	27	532
2015	727	41	302	384	47	516
2016	720	22	270	428	27	423
2017	664	19	250	395	21	387
2018	670	20	247	403	24	357
<b>Total</b>	<b>7,614</b>	<b>259</b>	<b>3,092</b>	<b>4,263</b>	<b>302</b>	<b>4,969</b>

**Note:** There are instances where a female and a male driver were involved in the same crash causing multiple counting in the data above. In addition, drivers whose gender was unknown are excluded.